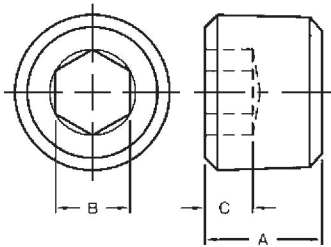


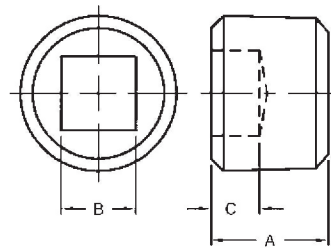


## Long Dryseal Pipe Plugs



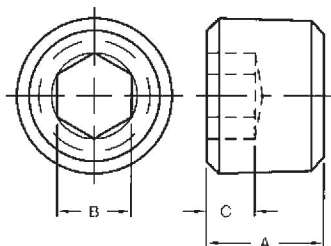
Hex Socket Part No.	Square Socket Part No.	Size				
			A	Hex B	Square B	C
500-0101	520-0101	1/16 - 27	.30	5/32	1/8	1/8
500-0201	520-0201	1/8 - 27	.30	3/16	3/16	1/8
500-0401	520-0401	1/4 - 18	.46	1/4	1/4	3/16
500-0601	520-0601	3/8 - 18	.46	5/16	5/16	3/16
500-0801	520-0801	1/2 - 14	.61	3/8	3/8	1/4
500-1201	520-1201	3/4 - 14	.62	9/16	1/2	5/16
500-1601	520-1601	1 - 11 1/2	.77	5/8	1/2	3/8
500-2001	520-2001	1 1/4 - 11 1/2	.84	3/4	3/4	7/16

## Short S.A.E. Drain Plugs



Hex Socket Part No.	Square Socket Part No.	Size				
			A	Hex B	Square B	C
510-0101	530-0101	1/16 - 27	.26	5/32	1/8	1/8
510-0201	530-0201	1/8 - 27	.27	3/16	3/16	5/32
510-0401	530-0401	1/4 - 18	.41	1/4	1/4	7/32
510-0601	530-0601	3/8 - 18	.41	5/16	5/16	1/4
510-0801	530-0801	1/2 - 14	.54	3/8	3/8	1/4
510-1201	530-1201	3/4 - 14	.55	9/16	1/2	5/16
510-1601	530-1601	1 - 11 1/2	.69	5/8	1/2	5/16
510-2001	530-2001	1 1/4 - 11 1/2	.72	3/4	3/4	3/8

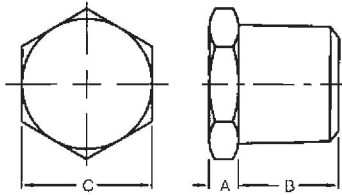
## Flush-Seal Type Heat Treated Pipe Plugs



Part No.	Size	A	B	C
780-0103	1/16 - 27	.250	.156	.141
780-0203	1/8 - 27	.250	.188	.141
780-0403	1/4 - 18	.406	.250	.225
780-0603	3/8 - 18	.406	.312	.266
780-0803	1/2 - 14	.531	.375	.329
780-1203	3/4 - 14	.531	.562	.329
780-1603	1 - 11 1/2	.656	.625	.360
780-2003	1 1/4 - 11 1/2	.656	.750	.360

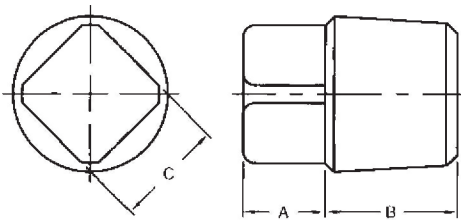


## Hex Head Pipe Plugs



Part No.	Size	A	B	C
580-0201	1/8 - 27	.19	3/8	7/16
580-0401	1/4 - 18	.19	9/16	9/16
580-0601	3/8 - 18	.22	9/16	11/16
580-0801	1/2 - 14	.22	3/4	7/8

## Square Head Pipe Plugs



Part No.	Size	A	B	C
550-0201	1/8 - 27	.26	.31	9/32
550-0401	1/4 - 18	.32	.45	3/8
550-0601	3/8 - 18	.36	.47	7/16
550-0801	1/2 - 14	.40	.63	9/16
550-1201	3/4 - 14	.46	.64	5/8